

NEW LOW-POWERED LASER  
high-powered features



**KEEPS OPERATING ROOM RUNNING SMOOTHLY**

Advisory messages provide early warning system to prevent schedule interruptions and enable cases to be completed even when laser has diminished capacity.

- **SERVICE SOON ALERT**  
Tells operator that approximately 5 or less treatments remain before service should be performed.
- **CASESAVER™ ALERT**  
Informs user that laser is operating at reduced energy so treatment can continue and service can be scheduled after completion.

PART OF THE PLAN FOR A  
high-powered future

The new VersaPulse PowerSuite 20 Watt holmium laser is the low-powered member of the VersaPulse PowerSuite family. Which makes it an economical choice if lithotripsy is the primary procedure performed in your hospital.

- New treatment and laser summaries and options not found with any other Holmium laser
- Plugs into a standard outlet
- Smaller and lighter than other VersaPulse PowerSuite models

As you look toward procedures that will be important to your practice in the future, count on the VersaPulse PowerSuite family to provide proven solutions.

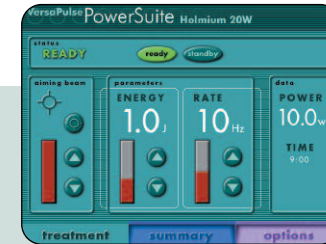
The VersaPulse PowerSuite Holmium and Dual Wavelength Lasers provide a wide range of power for incredible versatility across multiple applications. You can go from low-powered lithotripsy all the way to high-powered Holmium laser prostatectomy. In addition, every model is compatible with over 20 Lumenis delivery devices and accessories, including reusable fibers.

And, with every VersaPulse PowerSuite laser, you can count on the fact that Lumenis quality runs in the family.

3 TOUCH SCREENS ARE  
easy-to-use

**TREATMENT SCREEN**

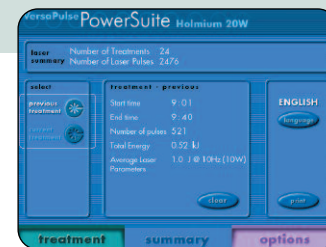
- Offers excellent visibility in bright and low-light environments
- Provides unmatched treatment flexibility with over 80 user-selectable laser parameter settings



Enables selection of ready or standby mode, aiming beam intensity in blinking or continuous mode, and laser parameters. Shows power, time of day, and any advisory messages.

**SUMMARY SCREEN**

- Comprehensive information enables clinical, academic, and economic evaluations
- Optional treatment printout saves staff time and reduces transcription errors
- Printout also enables viewing of every laser parameter setting used during treatment for complete case analysis



Displays laser summary with cumulative number of treatments and laser pulses, current advisory messages, and treatment summary, including laser start and stop time, number of pulses, total energy, and average laser parameters. Enables viewing, clearing, and optional printing of current and previous treatment summaries.

**OPTIONS SCREEN**

- Provides easy adjustment of options to fit your preferences



Allows the selection of English or icon interface for screens and adjustment of real time clock and beep volume.

## 20 POWERFUL WATTS OF Lumenis quality

It's innovative and affordable. And it offers 20 powerful watts of Lumenis quality, making it an important new addition to the VersaPulse PowerSuite family.

In fact, the VersaPulse PowerSuite 20 Watt Holmium laser offers a whole lot more than other low-powered lasers.

- Easy to use—intuitive user interface offers data and options unavailable on any other laser
- Easy to plug in—works with a standard outlet
- Easy to move—compact size for convenient transport
- Easy to record—permanent record of treatment information using optional printer

There's really no other low-powered laser like it for lithotripsy and soft-tissue applications. So take a look at the new VersaPulse PowerSuite 20 Watt Holmium laser. Since it's a chip off the VersaPulse PowerSuite block, you can count on the fact that quality runs in the family!

## A LONG LINE OF laser firsts

### Lumenis Global Sales Offices

**Lumenis Inc.**  
2400 Condensa Street  
Santa Clara, CA 95051 USA  
Tel 408 764 3000  
877 586 3647  
Fax 408 764 3999  
800 505 1133

**Lumenis (GERMANY) GmbH**  
Dreieich-Dreieichenhain,  
Germany  
Tel + 49 6103 8335 0  
Fax + 49 6103 8335 300

**Lumenis (FRANCE) SARL**  
Orsay, France  
Tel + 33 1 69 33 14 20  
Fax + 33 1 60 19 57 23

**Lumenis (ITALY) Srl.**  
Formello (RM), Italy  
Tel + 39 06 90 75 230  
Fax + 39 06 90 75 269

**Lumenis (UK) Ltd.**  
London, UK  
Tel + 44 20 8324 4200  
Fax + 44 20 8324 4222

**Lumenis (JAPAN) Co. Ltd.**  
Tokyo, Japan  
Tel + 81 3 5789 8300  
Fax + 81 3 5789 8310

**Lumenis (CHINA) Ltd.**  
Beijing, China  
Tel + 86 10 6510 2620  
Fax + 86 10 6510 2621

**Lumenis (HK) Ltd.**  
Hong Kong  
Tel + 852 2174 2800  
Fax + 852 2722 5151

Internet: [www.lumenis.com](http://www.lumenis.com)

Email: [information@lumenis.com](mailto:information@lumenis.com)

At Lumenis, we constantly look for opportunities to expand the medical applications of laser technology. This has resulted in an impressive record of innovation:

- First laser for ophthalmology
- First to introduce the Holmium laser for orthopedics
- First full line of reusable fiber delivery devices
- First to support clinical research for Holmium laser lithotripsy
- First Holmium laser used for urinary lithotripsy
- First reliable 200 micron reusable fiber delivery device
- First to develop CO2 lasers for facial resurfacing
- First to support research for Holmium laser prostatectomy
- First to develop multiple-wave-length surgical lasers
- First to receive FDA clearance for Holmiumlaser resection of the prostate
- First 100 Watt Holmium laser
- First to offer world-class training centers for Holmium laser prostatectomy
- First soft-tissue morcellator for Holmium laser prostatectomy

Lumenis, its logo, PowerSuite, VersaPulse and CaseSaver are trademarks or registered trademarks of the Lumenis group of companies. Federal law restricts this device to sale by or on the order of a physician. Product specifications are subject to change without notice. Copyright © 2005, the Lumenis group of companies. All rights reserved. Printed in the U.S.A.

PBS000016 rev. B



## VersaPulse® PowerSuite™ A Chip Off the Old Block



20 Watt Holmium Laser

